

Sample information

Sample Name : #01GT21-SNR02
Sample ID : H21052110
Analysis date : 25/05/2021
Matrix : Plant material
Sampling : Ext

Customer data

WIDORA International srl
via di Ripoli 188
50126 Firenze (FI)
P.IVA 07002830482

Cannabinoid profile

Detector A

Name	Dry weight %
CBDV	0,00
CBDA	2,60
CBGA	0,08
CBG	0,00
CBD	0,38
THCV	0,00
CBN	0,00
d9-THC	0,02
d8-THC	0,00
CBC	0,03
THCA	0,08

Total THC	0,09	%
Total THC	0,88	mg/g
Total CBD	2,66	%
Total CBD	26,57	mg/g

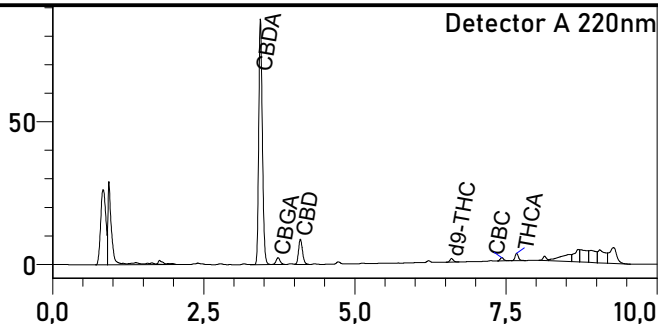
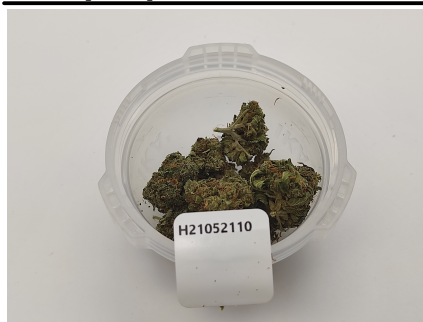
% = (w / w) = (Analyte weight / Product weight)

* Total THC / CBD is calculated using formulas following in order to calculate the group loss carboxylic during decarboxylation
Total THC = THC + (THCA * 0.877)
Total CBD = CBD + (CBDA * 0.877)

LOD (Limit of Detection) **: 0.002%
LOQ (Limit of Quantification) **: 0.005%
** For all cannabinoids

Moisture at the time of analysis - 9.46%

Sample photo



The analysis for the quantitative determination of the main cannabinoids was released on 25/05/2021

25/05/2021



Responsabile di laboratorio - Dr Edoardo Alfinito

The results of the analysis are based on the sample sent to Ambra Srl under the conditions received.
Ambra Srl guarantees that all analytical work is carried out professionally in accordance with the standards laboratory tests using methods validated by the scientific community.
This Certificate cannot be reproduced, if not complete, without the approval of Ambra srl