

## Sample information

Sample Name : MEGA GELATO #01LP21-GLT02  
 Sample ID : H23062111  
 Analysis date : 23/06/2021  
 Matrix : Plant material  
 Sampling : Ext

## Cannabinoid profile

### Detector A

Name	Dry weight %
CBDV	0,00
CBDA	3,48
CBGA	0,05
CBG	0,00
CBD	0,54
THCV	0,00
CBN	0,00
d9-THC	0,05
d8-THC	0,00
CBC	0,10
THCA	0,10

Total THC	0,14	%
Total THC	1,41	mg/g
Total CBD	3,59	%
Total CBD	35,93	mg/g

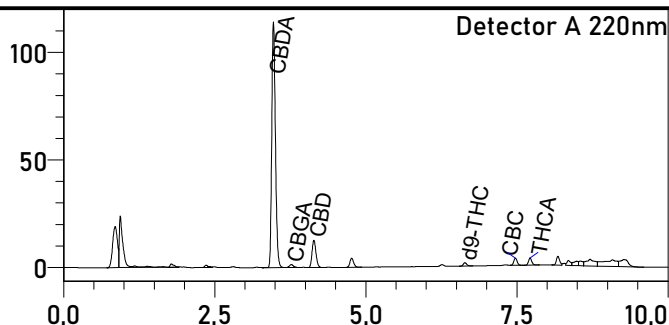
% = (w / w) = (Analyte weight / Product weight)

\* Total THC / CBD is calculated using formulas following in order to calculate the group loss carboxylic during decarboxylation  
 Total THC = THC + (THCA \* 0.877)  
 Total CBD = CBD + (CBDA \* 0.877)

LOD (Limit of Detection) \*\*: 0.002%  
 LOQ (Limit of Quantification) \*\*: 0.005%  
 \*\* For all cannabinoids

Moisture at the time of analysis - 11.71%

## Sample photo



The analysis for the quantitative determination of the main cannabinoids was released on 24/06/2021

24/06/2021



Responsabile di laboratorio - Dr Edoardo Alfinito

The results of the analysis are based on the sample sent to Ambra Srl under the conditions received.  
 Ambra Srl guarantees that all analytical work is carried out professionally in accordance with the standards laboratory tests using methods validated by the scientific community.  
 This Certificate cannot be reproduced, if not complete, without the approval of Ambra srl

