

Email: info@Scienzainfiore.it - PEC: amministrazione@pec.scienzainfiore.it



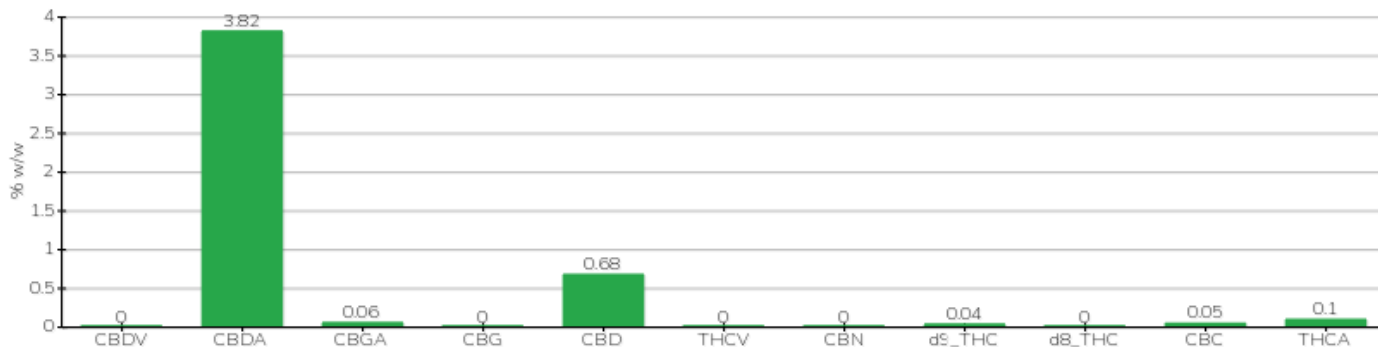
TECHNICAL REPORT

Client	Widora International S.r.l.	Sample name	Kush 19 02
Sample receipt date	12/23/2022	Sample type	infiorescenza
Processing date	12/27/2022	Variety	NA
Internal reference code	WID2312.1	Seeds number / Lot	NA
Analytical Method	HPLC - HS - Rev.2	Sampling method	By Custome
Lot	#01GG23-KSH02		

Note

Analyte	% w/w	Method
CBDV	<0.01%	HPLC-UV
CBDA	3.82%	HPLC-UV
CBGA	0.06%	HPLC-UV
CBG	<0.01%	HPLC-UV
CBD	0.68%	HPLC-UV
THCV	<0.01%	HPLC-UV
CBN	<0.01%	HPLC-UV
d9_THC	0.04%	HPLC-UV
d8_THC	<0.01%	HPLC-UV
CBC	0.05%	HPLC-UV
THCA	0.10%	HPLC-UV
TOTAL CBD	4.03%	CALCULATED
TOTAL CBG	0.05%	CALCULATED
TOTAL THC	0.13%	CALCULATED

SAMPLE ANALYZED: NA(3.00gr)



Pineto

12/28/2022